

SUBMITTAL/TECHNICAL DATA SHEET



ADVANTAGES

- MATERIAL:**
- U-LP : 14 gauge galvanized steel cover and 14 gauge galvanized steel curb with a 12 gauge galvanized steel curb cap
 - U-LPA : .10 Aluminum cover and .10 Aluminum curb with .125 Aluminum curb cap
 - U-LPAG : .10 Aluminum cover and 14 gauge galvanized steel curb with 12 gauge galvanized steel curb cap

- FINISH:**
- Galvanized Steel: Mill Finish
 - Aluminum: Mill Finish

COVER: High-strength composite construction with exterior cover and liner bonded to a 2" core of rigid foam-type insulation

CURB: 1 1/2" in height with 3 1/2" pre-drilled mounting flanges and counterflashing with 1" thick exterior fiberboard insulation

GASKET: Polyurethane Foam Gasket adhered to the entire perimeter of curb

HINGES: Steel Pintle Hinge

SPRINGS: Dampened Gas Springs to open against 10 psf snow or wind load at a safe controlled speed

LATCHES: Latch designed to open automatically with parting of single 165 degree fusible link or manually with interior and exterior pull release handles without disturbing the fusible link. Designed to withstand 90 psf wind uplift for class 90 roof decks.

HARDWARE: All hardware is zinc plated (stainless steel hardware optional)

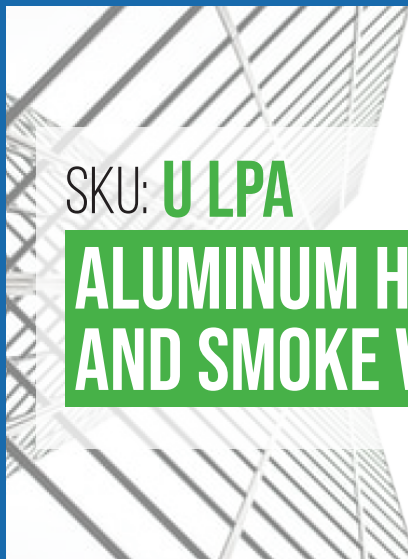
LOAD CAPACITY: 50psf

OPERATION: Covers automatically spring open to approximately 90 degrees in the event of fire, being actuated by the parting of a single UL-listed 165 degree F fusible link, automatically locking in the fully opened position

- CERTIFICATIONS:**
- UL 793 Listed
 - UL 790 Certified

Heat & Smoke Vents Protect in the Event of Smoke & Fire: Opens instantly when UL listed fusible link is exposed to a temperature of 165 degrees to release noxious smoke and deadly gases out of the building.

For a complete list of options visit www.AccessDoorsAndPanels.com



SKU: **U LPA**

ALUMINUM HEAT AND SMOKE VENT



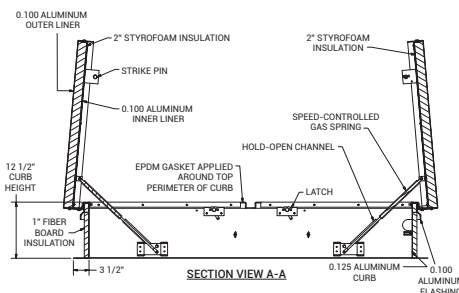
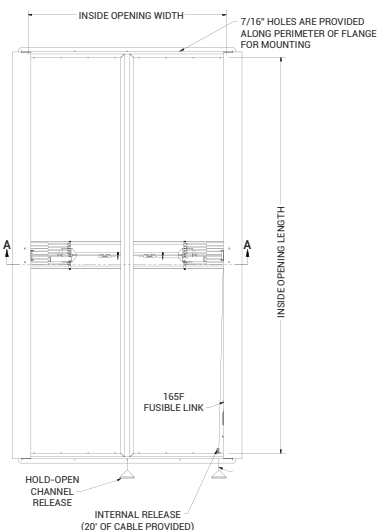
DIMENSIONS AND APPEARANCE

>> CLICK TO VIEW ADDITIONAL DETAILS AND PRICING <<

STANDARD SIZES AND PRODUCT NUMBERS:

DOOR SIZE	MATERIALS	MODEL	SHIPPING WEIGHT LBS.
4'0" x 4'0"	Aluminum	U-LPA-4848	190
4'0" x 5'0"	Aluminum	U-LPA-4860	225
4'0" x 6'0"	Aluminum	U-LPA-4872	265
4'0" x 7'0"	Aluminum	U-LPA-4884	310
4'0" x 7'6"	Aluminum	U-LPA-4890	320
4'0" x 8'0"	Aluminum	U-LPA-4896	345
4'6" x 4'0"	Aluminum	U-LPA-5448	210
4'6" x 5'0"	Aluminum	U-LPA-5460	255
4'6" x 6'0"	Aluminum	U-LPA-5472	305
5'0" x 5'0"	Aluminum	U-LPA-6060	270
5'0" x 6'0"	Aluminum	U-LPA-6072	315
5'0" x 7'0"	Aluminum	U-LPA-6084	370
5'0" x 8'0"	Aluminum	U-LPA-6096	415
5'0" x 9'0"	Aluminum	U-LPA-60108	460
5'6" x 6'0"	Aluminum	U-LPA-6672	345
5'6" x 7'0"	Aluminum	U-LPA-6684	400
5'6" x 8'0"	Aluminum	U-LPA-6696	455
5'6" x 9'0"	Aluminum	U-LPA-66108	520
6'0" x 6'0"	Aluminum	U-LPA-7272	375
6'0" x 7'0"	Aluminum	U-LPA-7284	440
6'0" x 8'0"	Aluminum	U-LPA-7296	515
6'0" x 9'0"	Aluminum	U-LPA-72108	570

Check the Second Page for more Detailed Information



PROJECT DATA

Custom Sizes Available - Fast!

Scan or Click



To view Pricing and Additional Product Info.

PROJECT NAME :	QTY	W	H	OPTIONS
ARCHITECT :				
DEALER :				
CONTRACTOR :				
LOCATION :	SPECIAL INSTRUCTIONS :			
DATE :	SUBMITTAL APPROVAL : (signature or stamp)			
TAGGING INSTRUCTIONS :				

TELEPHONE:
1-888-457-1275
FAX:
1-888-626-2907



PO BOX 66738 #76520,
SAINT LOUIS, MO
63166-6738
USA



WEBSITE:
www.AccessDoorsAndPanels.com
E-MAIL:
info@accessdoorsandpanels.com



ULPA

BIG SMOKY UL VENTS

STANDARD MODEL TABLE:

MODEL	WIDTH, IN	LENGTH, IN	MODEL	WIDTH, IN	LENGTH, IN
ULPA-4848	48	48	ULPA-60144	60	144
ULPA-4860	48	60	ULPA-6672	66	72
ULPA-4872	48	72	ULPA-6684	66	84
ULPA-4884	48	84	ULPA-6696	66	96
ULPA-4890	48	90	ULPA-66108	66	108
ULPA-4896	48	96	ULPA-66120	66	120
ULPA-5448	54	48	ULPA-66132	66	132
ULPA-5460	54	60	ULPA-66144	66	144
ULPA-5472	54	72	ULPA-7272	72	72
ULPA-6060	60	60	ULPA-7284	72	84
ULPA-6072	60	72	ULPA-7296	72	96
ULPA-6084	60	84	ULPA-72108	72	108
ULPA-6096	60	96	ULPA-72120	72	120
ULPA-60108	60	108	ULPA-72132	72	132
ULPA-60120	60	120	ULPA-72144	72	144
ULPA-60132	60	132	-	-	-

